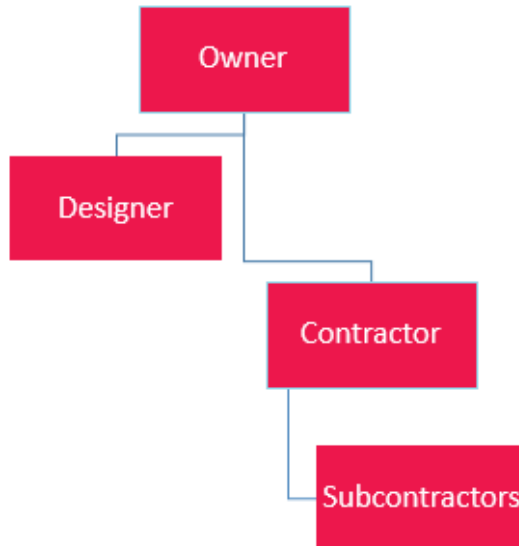


Project Delivery Models

Design Bid Build

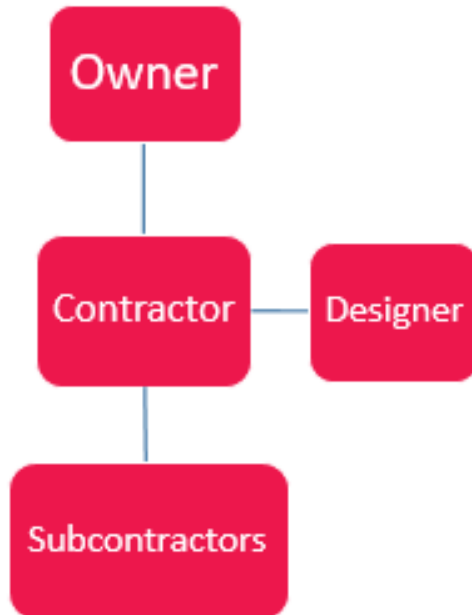


- 2 contracts with Owner
- 3 defined and sequential stages
- Designer selected by Owner
- Detailed specs included in tender package; prepared prior to construction start
- Little collaboration between designer and contractor



Project Delivery Models

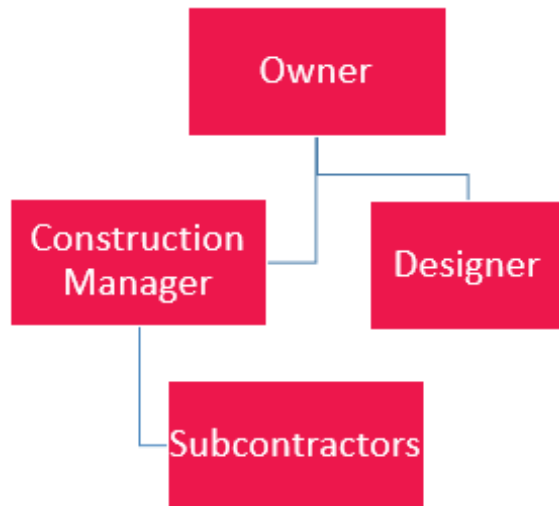
Design Build



- 1 contract with Owner
- Stages not clear/ lots of crossover
- Owner selects design-build contractor; contractor selects consultants as needed
- Collaboration between designer and contractor

Project Delivery Models

Construction Management (at risk)

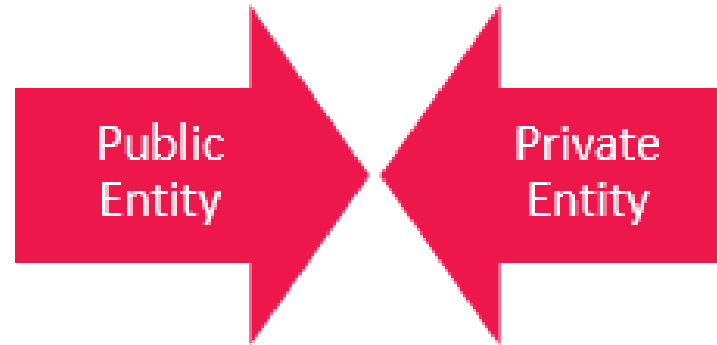


- Similar to DBB method
- 2 contracts with Owner
- Stages not as clear at DBB
- Designer selected by Owner
- Design process starts with intent of 2nd contract forming once designs are partially complete
- Intent for collaboration between designer and CM firm



Project Delivery Models

Public Private Partnership

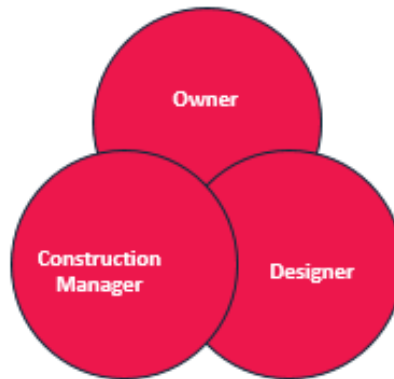


- Long-term approach for procuring infrastructure
- Private entity finances, plans, designs, builds, maintains, therefore additional risks allocated to them
- Model used with projects requiring long term maintenance
- Cost certainty over long term is key focus



Project Delivery Models

Integrated project Delivery



- 1 contract
- All parties (poly party members) sign onto single contract
- All parties involved in design phase, long process before any construction begins
- Risks and rewards (incentive layer) shared equally among all entities
- Unique contract clauses

